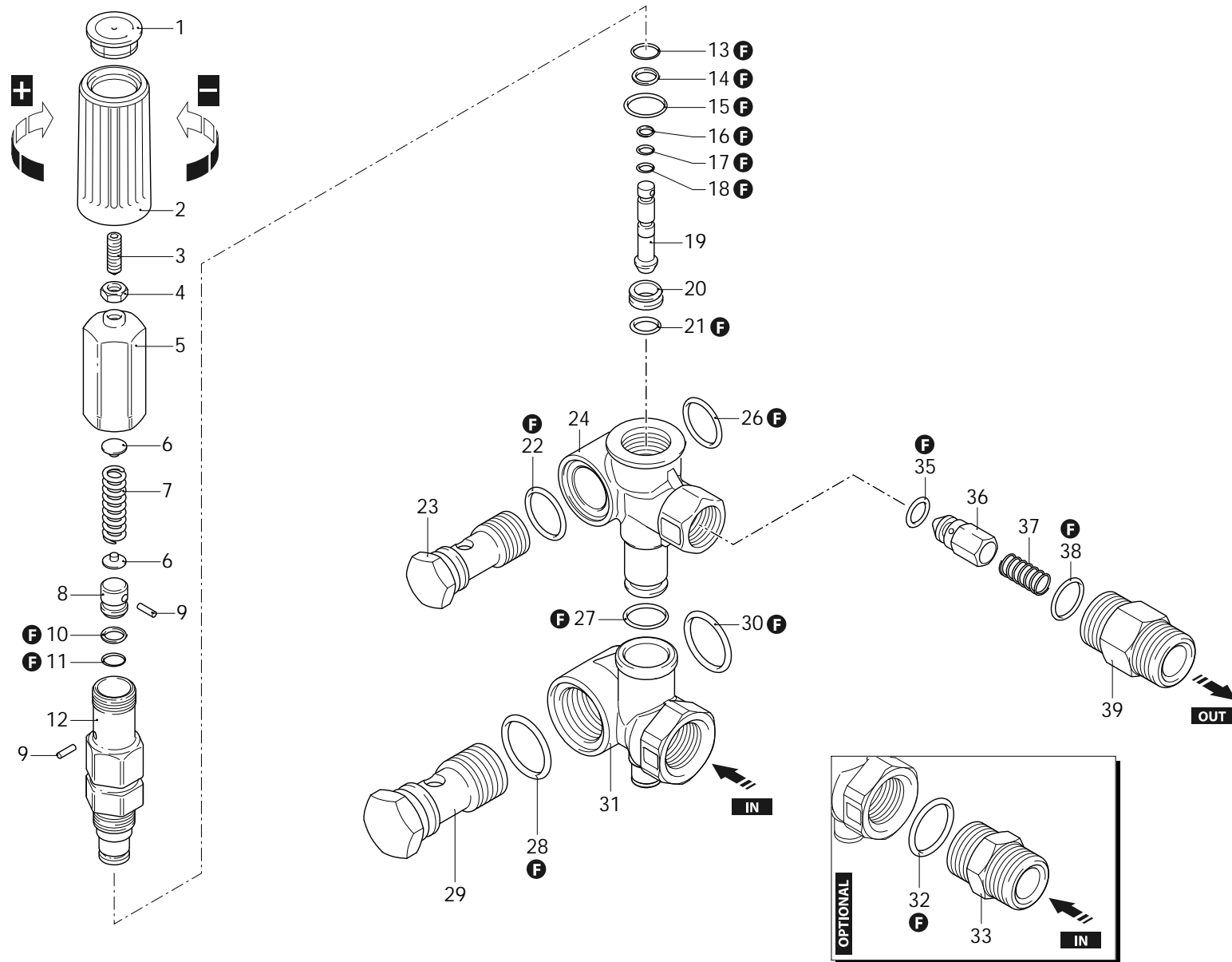




Regulation valves

# MINIMATIC 4/B

180 bar



AR-1\_000169\_v01

26/11/2021



Regulation valves

# MINIMATIC 4/B

180 bar

P	Code	Description	Q	Note	Validity	P	Code	Description	Q	Note	Validity
1	1981770	Plug	1								
2	1981780	Knob	1								
3	1980470	Screw	1	M6x20							
4	1980300	Nut	1	M6							
5	1980390	Insert	1		Lubricate with grease Molykote PG54						
6	1980220	Plate	2								
7	1271070	Spring	1								
8	1080041	Piston	1	upper							
9	1080070	Pin	2								
10	1080401	Ring	1	anti-extrusion							
11	1080250	O-ring	1	Ø 7,66x1,78							
12	1980210	Piston guide	1		Screw with Loxeal 55-14 / C=15Nm						
13	740290	O-ring	1	Ø 14x1,78	Lubricate with grease Molykote PG54						
14	800560	O-ring	1	Ø 8,73x1,78	Lubricate with grease Molykote PG54						
15	880830	O-ring	1	Ø 15,54x2,62							
16	1271170	Ring	1	anti-extrusion							
17	1080190	O-ring	1	Ø 2,90x1,78	Lubricate with grease Molykote G807						
18	1080190	O-ring	1	Ø 2,90x1,78	Lubricate with grease Molykote G807						
19	1271160	Piston	1	inferiore							
20	1980200	Seat	1								
21	1470210	O-ring	1	Ø 9x1							
22	390080	O-ring	1	Ø 11,91x2,62	Lubricate with grease Molykote G807						
23	1540272	Screw	1	3/8" G	C=30Nm						
24	1540510	Valve body	1								
26	1140450	O-ring	1	Ø 20,24x2,62	Lubricate with grease Molykote PG54						
27	390080	O-ring	2	Ø 11,91x2,62	Lubricate with grease Molykote G807						
28	880270	O-ring	1	Ø 17,17x1,78							
29	2260420	Screw	1	1/2" G brass	C=40Nm						
30	1540630	O-ring	1	Ø 23,47x2,62	Lubricate with grease Molykote PG54						
31	1540280	Suction fitting	1	1/2" G							
32	480440	O-ring	1	Ø 17,13x2,62							
33	1540050	Fitting	1	1/2" G (M-M)	C=40Nm						
35	1460430	O-ring	1	Ø 4x2,5							
36	1540170	Shutter	1	nickel							
37	1080091	Spring	1								
38	394280	O-ring	1	Ø 12,42x1,78	Lubricate with grease Molykote PG54						
39	1540180	Fitting	1	3/8" G	Screw with Loxeal 55-14 / C=25Nm						
F	2812	Gasket kit	1								

Revision: 1

Oil type: -

Attachment:

Date: 26/11/2021

Oil quantity: -

*C=Tightening torque (Tolerance +0 ÷ -10%)*