

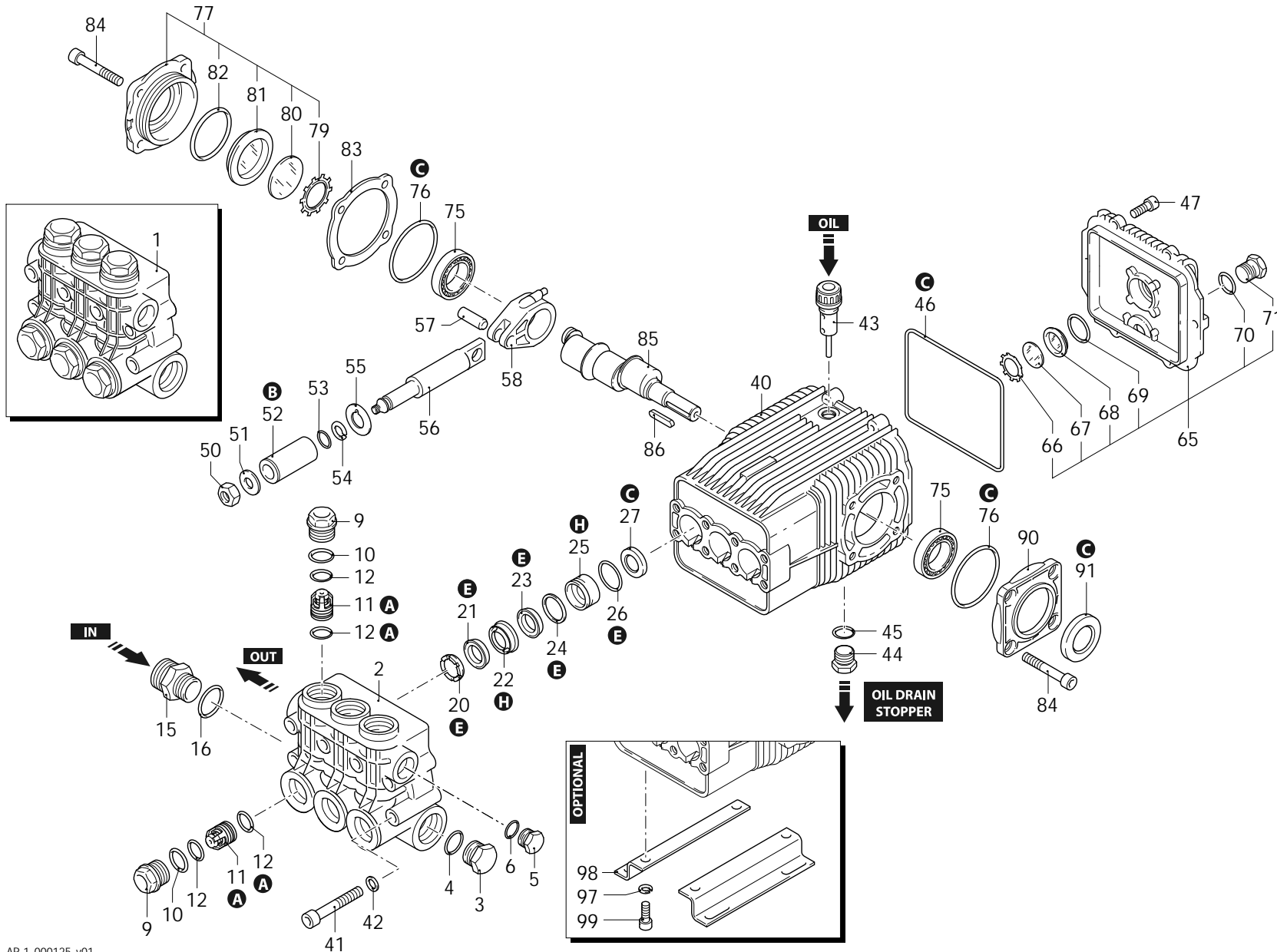


Series 194
XWL

N

1450rpm

ø 24mm



- A
- B
- C
- E
- H

AR-1_000125_v01

30/11/2021



Series 194
XWL

N

1450rpm

∅ 24mm

P	Code	Description	Q	Note	Validity	P	Code	Description	Q	Note	Validity
1	1949210	Head assembly	1	∅ 28 nickel plated		66	1260430	Ring	1		
2	1941860	Head	1	nickel plated		67	1780690	Plate	1		
3	1140480	Plug	1	3/4" G nickel	C=35Nm	68	1260250	Level gauge	1		
4	550350	O-ring	1	∅ 23,81x2,62		69	1140450	O-ring	1	∅ 20,24x2,62	Lubricate with grease Molykote PG54
5	1981180	Plug	1	3/8" G nickel	Screw with Loxeal 55-14 / C=20Nm	70	740290	O-ring	1	∅ 14x1,78	Lubricate with grease Molykote PG54
6	740290	O-ring	1	∅ 14x1,78	Lubricate with grease Molykote PG54	71	1980740	Plug	1	3/8" G brass	C=20Nm
9	1941790	Plug	6	nickel		75	1140410	Bearing	2		
10	1940150	Ring	6	anti-extrusion		76	1941380	O-ring	2	∅ 66,34x2,62	
11	1949050	Complete valve	6			77	1949011	Cover	1		
12	1140450	O-ring	12	∅ 20,24x2,62	Lubricate with grease Molykote PG54	79	1941290	Ring	1		
15	1943270	Fitting	1	1" G - 3/4" G (M-M)		80	1941260	Plate	1		
16	550350	O-ring	1	∅ 23,81x2,62		81	1941270	Level gauge	1		
20	1941570	Ring	3	support ∅ 28		82	100410	O-ring	1	∅ 34,6x2,62	
21	820630	Water seal	3	∅ 28 brown	Lubricate with grease Molykote PG54	83	1941390	Shim 0.05mm	1		
22	1140280	Piston guide	3	front ∅ 28		83	1941400	Shim 0.10mm	1		
23	2520360	Gasket	3	∅ 28	Lubricate with grease Molykote PG54	83	1941410	Shim 0.19mm	1		
24	2520230	Ring	3	anti-extrusion		83	1941420	Shim 0.25mm	1		
25	1942260	Piston guide	3	rear ∅ 28		84	850370	Screw	8	TCEI M8x16	C=24,5Nm
26	1140490	O-ring	3	∅ 37,82x1,78		85	1943280	Shaft	1	10 marked	
27	1940560	Ring	3	seal		86	650250	Key	1		
40	1941330	Pump body	1			90	1941240	Support	1		
41	1940260	Screw	8	TCEI M10x80	C=50Nm	91	820680	Ring	1	seal	Screw with Loxeal 55-14 / C=10Nm
42	650530	Washer	8			97	200231	Washer	4		
43	1140370	Plug	1			98	1940370	Foot	2		
44	1980740	Plug	1	3/8" G brass	C=20Nm	99	1940380	Screw	4	TCEI 10x18	C=50Nm
45	740290	O-ring	1	∅ 14x1,78	Lubricate with grease Molykote PG54	A	2780	Valve kit	1		
46	1940410	O-ring	1	∅ 132x3		B	1849	Piston kit	1	∅ 28	
47	1200430	Screw	6	TCEI M6x16	Screw with Loxeal 55-14 / C=10Nm	C	2873	Oil seal kit	1		
50	1940570	Nut	3		Screw with Loxeal 55-14 / C=20Nm	E	42708	Water seal kit	1	∅ 28	
51	1940580	Washer	3			H	42707	Piston guide kit	1	∅ 28	
52	1140190	Piston	3	∅ 28							
53	880840	O-ring	3	∅ 9,25x1,78	Lubricate with grease Molykote G807						
54	1940120	Ring	3	anti-extrusion							
55	1140160	Plate	3								
56	1940070	Piston	3	guide							
57	1940060	Pin	3								
58	1940051	Connecting-rod	3	aluminium	Lubricate with grease Molykote BR2 PLUS						
65	1949010	Cover	1	complete							

Revision: 1

Oil type: SAE 15W40

Attachment:

Date: 30/11/2021

Oil quantity: 0,870 Kg

C=Tightening torque (Tolerance +0 ÷ -10%)